

Stellar® Service Crane

EC4000



EC4000 ★ TECHNICAL SPECIFICATION GUIDE



Our People. Our Products.



TECHNICAL SPECIFICATION GUIDE

■ SPECIFICATION INFORMATION

Crane Rating:
Standard Boom Length:

16' OPTION

16,000 ft-lb (2.21 tm)
8' (2.44 m) from CL of Crane

20' OPTION

16,000 ft-lb (2.21 tm)
10' (3.05 m) from CL of Crane

Boom Extension:

- 1st stage:
- 2nd stage:

Hydraulic 48" (121.9 cm)
Manual 48" (121.9 cm)

Hydraulic 60" (152.4 cm)
Manual 60" (152.4 cm)

Max. Horizontal Reach:
Maximum Vertical Lift:
(from crane base)

16' (4.88 m) from CL of Crane
17' 4" (5.28 m)

20' (6.10 m) from CL of Crane
21' 3" (6.48 m)

Boom Elevation:

-5 to +80 degree

-5 to +80 degree

Stowed Height:

28.53" (72.47 cm)

29.53" (75 cm)

Mounting Space Required:

19" x 19" (48.3 x 48.3 cm)

19" x 19" (48.3 x 48.3 cm)

Shipping Weight:

970 lbs (440 kg)

1180 lbs (535 kg)

Controls:

Radio control standard for all functions

Radio control standard for all functions

Winch

- Rope Length:
- Rope Diameter:
- Line pull speed:
- Max. single part line:
- Max. double part line:

90' (27.4 m)
5/16" (.79 cm)
15 ft/min (4.6 m/min)
2000 lbs (905 Kg)
4000 lbs (1815 Kg)

90' (27.4 m)
5/16" (.79 cm)
15 ft/min (4.6 m/min)
2000 lbs (905 Kg)
4000 lbs (1815 Kg)

Rotation:

410 degree power
(worm gear)

410 degree power
(worm gear)

Lifting Capacities:

4000 lbs @ 4' (1814 Kg @ 1.22 m)
935 lbs @ 16' (420 Kg @ 4.88 m)

4000 lbs @ 4' (1814 Kg @ 1.22 m)
800 lbs @ 20' (363 Kg @ 6.1 m)

Power Supply Required:

12 volt power unit
2.0 gpm @ 2300 psi
(7.57 lpm @ 159 bars)

12 volt power unit
2.0 gpm @ 2300 psi
(7.57 lpm @ 159 bars)

Min. Rec. Chassis (GVRW)

14,500

14,500

■ DEFINING CHARACTERISTICS

Planetary Drive Winch System

The winch is equipped with a 1.8 HP permanent magnet electric motor with a 315:1 planetary gear reduction system. This ensures that your winch will never quit lifting before it reaches the full rated capacity.

Double Boom Design

The double boom design makes it nearly twice as strong as the nearest competitor.

Gear Bearing Rotation

Uses same rotation system as the larger class cranes. There are no plastic bushings or brass gears in the rotation system. It uses a high strength steel ball bearing turntable gear, a high strength steel worm gear, and a cast steel worm gear housing.

Integral Rotation Stop

410 degrees of rotation with an integrated rotation stop. Integrated stops allow you the greatest performance while protecting wires and hoses from damage.

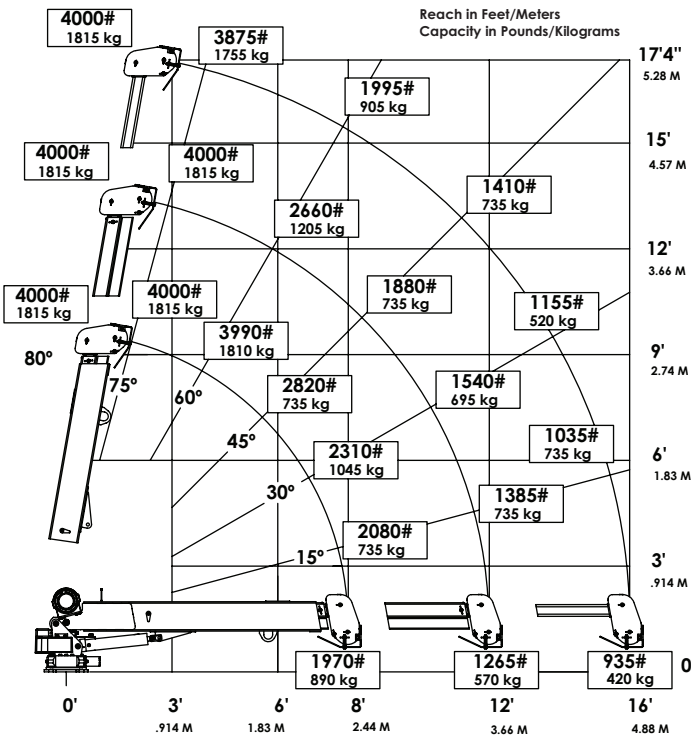
16' or 20' of Reach

Hydraulic 1st stage extension. Manual 2nd stage extension.

Radio Remote

Comes standard with a radio remote control.

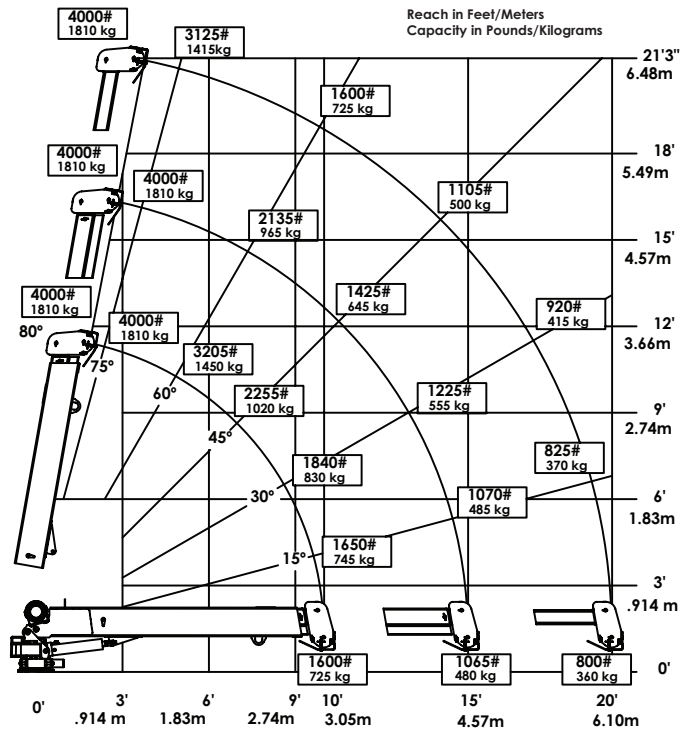
■ EC4000 CAPACITY CHART (16' SERIES)



Weight of load handling devices are part of the load lifted and must be deducted from the capacity.

Maximum 1 - part line capacity is 2000 lbs. (905 kg). For greater loads, use 2 - part line.

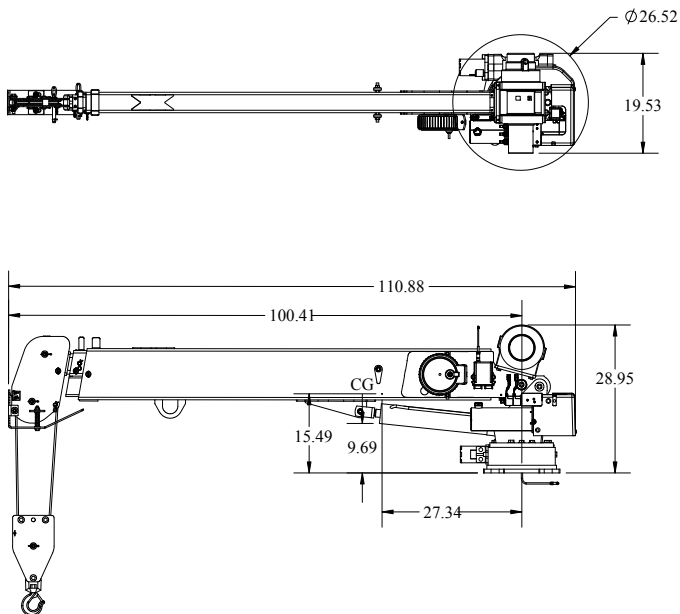
■ EC4000 CAPACITY CHART (20' SERIES)



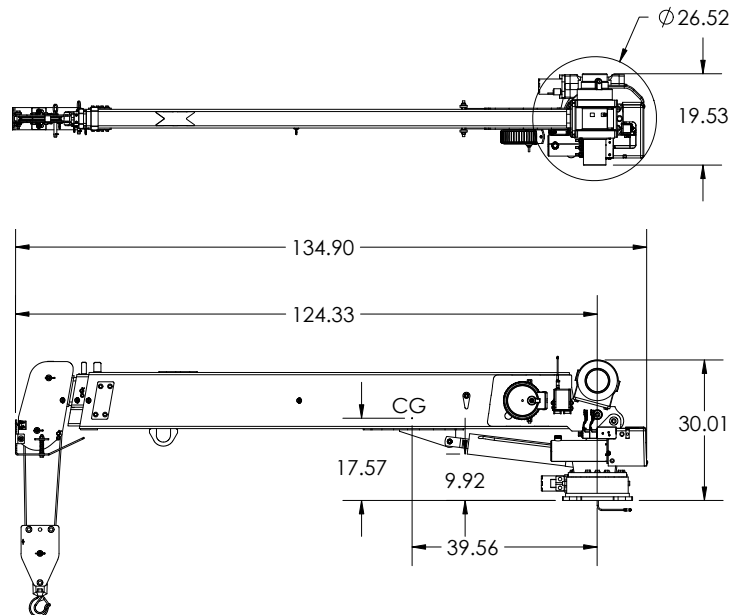
Weight of load handling devices are part of the load lifted and must be deducted from the capacity.

Maximum 1 - part line capacity is 2000 lbs. (905 kg). For greater loads, use 2 - part line.

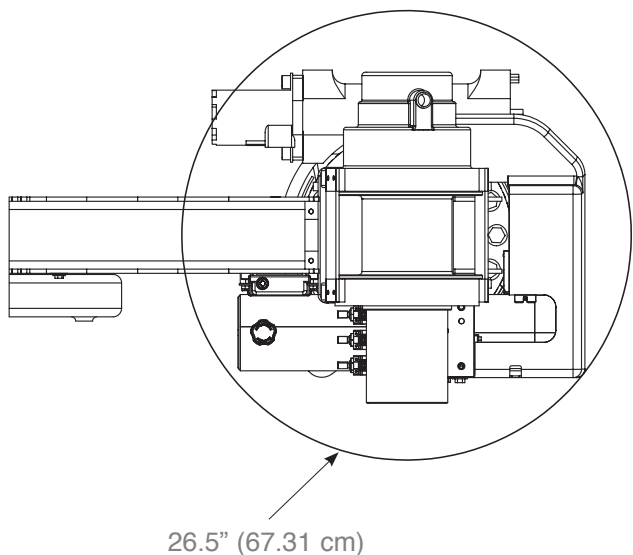
■ GEOMETRIC DIMENSIONS (16' OPTION)



■ GEOMETRIC DIMENSIONS (20' OPTION)

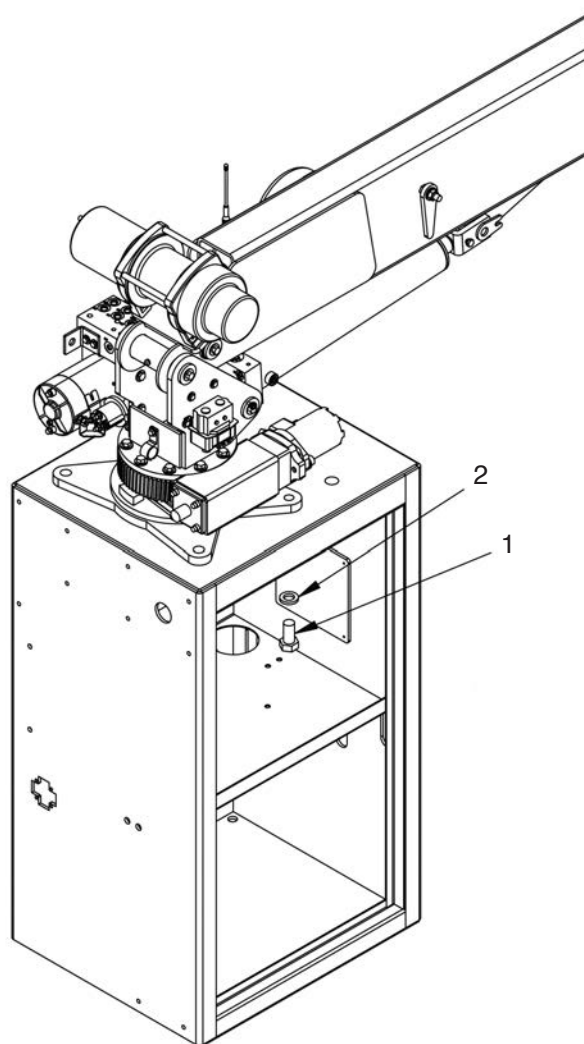


■ ROTATIONAL CLEARANCE

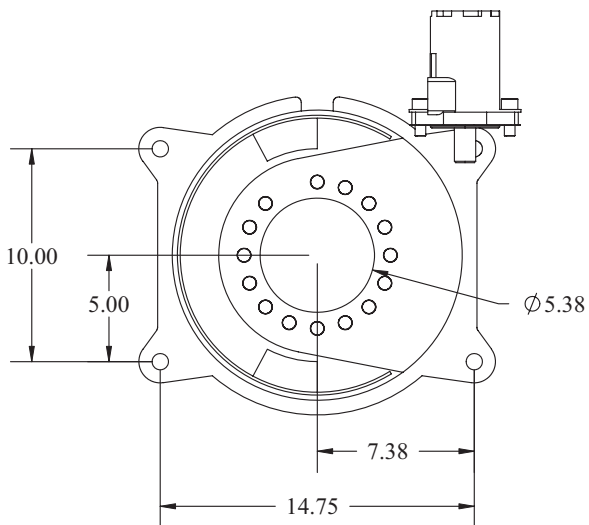


■ SERVICE BODY MOUNT

Mounts on 20" deep (or larger) side packs.



■ HOLE MOUNTING DETAIL



Item	Part	Description	Qty.
1	42985	Cap Scr 0.88-9x1.75 HHGR8ZY	4
2	8648	Washer 0.88 SAE GR8	4

Your local distributor:



Our People. Our Products.

190 State Street
 P.O. Box 169
 Garner, IA 50438
 Telephone: (641) 923-3741 • (800) 321-3741
 Fax: (641) 923-2812
 Internet: www.stellarindustries.com
 Email: sales@stellarindustries.com