


UTEM SKYTRACKER

UTI 4230



-  Exclusive 540 degree boom rotation with hourglass worm gear drive
Provides smooth and self locking rotation with a mechanical stop
-  Simple, reliable and economical design

Strength, innovation and service from UTEM



Utility Truck Equipment MFG, L.L.C.

PO Box 9

Hewitt, TX 76643

Phone: 888-765-3322 Fax: 254-857-9253

WWW.UTEMBUCKETS.COM

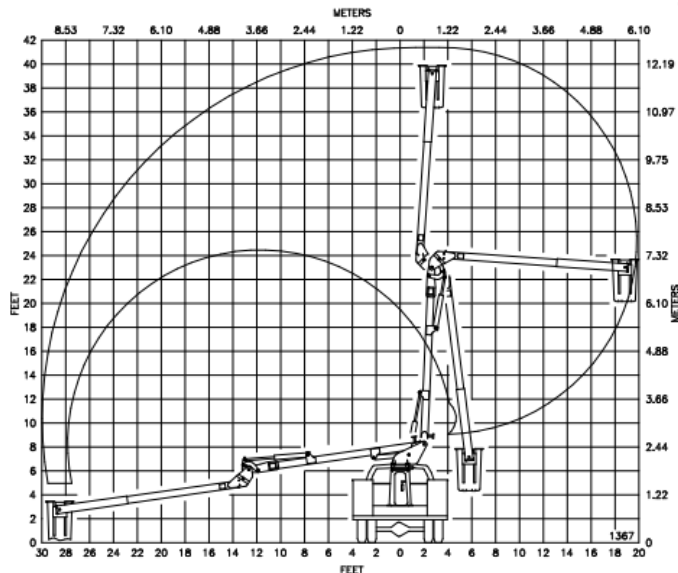
UTEM SKYTRACKER MODEL UTI4230

MECHANICAL SPECIFICATIONS

540° Boom rotation with mechanical stop
 Rotation drive is hourglass worm gear acting on a shear ball bearing
 Upper control override integral to the lower control valve
 Upper control emergency stop integral to the control valve
 Basket leveling by chain and rod mechanical system
 Boom cylinders have integral load holding valves
 High strength boom pins with non-lube bearings
 Pedestal is welded structure with reservoir mounted inside
 Standard color is UTEM white powder coat
 Body harness with shock absorbing lanyard

DIMENSIONAL SPECIFICATIONS

Horizontal side reach overcenter	30 ft (9.14 m)
Height to bottom of basket ¹	37 ft (11.27 m)
Working Height ¹	42 ft (12.80 m)
Stowed height ¹	10 ft 8 in (3.20 m)
Upper boom articulation in degrees	180° relative to lower boom
Lower boom articulation in degrees	-8° to 93°
Standard basket capacity	300 lbs (136kg)
Standard insulation gap	42 in (1.07m)
Tested and rated for Category D 46kV and below per ANSI A92.2-2015	
UTEM aerials meet or exceed ANSI A92.2-2015 and OSHA requirements	
¹ Based on 40 in. (1.02 m) chassis frame height	

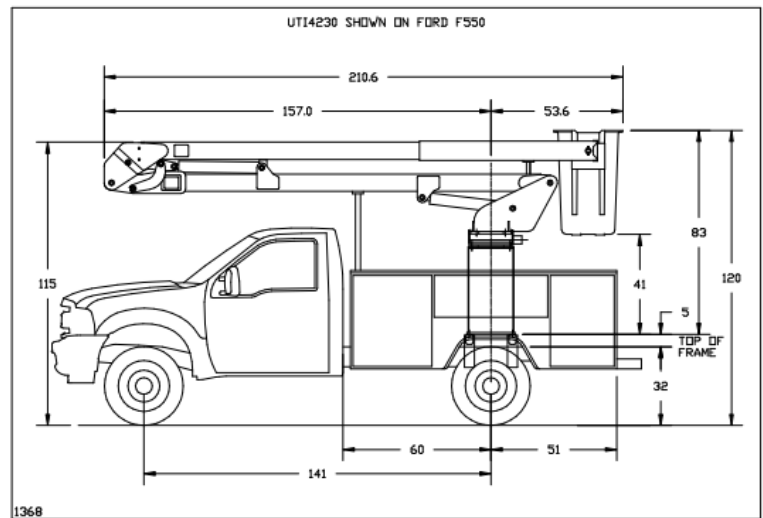


MINIMUM CHASSIS REQUIREMENTS

Vehicle GVWR	14500 lbs
Front axle GAWR	5000 lbs
Rear axle GAWR	11000 lbs
Frame section modulus	6.5 in ³
RBM of frame	234k in-lbs

HYDRAULIC SPECIFICATIONS

Operating pressure	3000 PSI (176kg/cm2)
Reservoir capacity w/sight gauge	15 Gal (57L)
Suction strainer mounted in reservoir	100 Mesh
Return line filter with bypass	10 Micron



OPTIONAL EQUIPMENT

- Baskets with molded step or steps
- 350 lbs (159kg) basket capacity
- Category C 46kV and below per ANSI A92.2-2015
- Extended fiberglass section for longer insulation gap
- Chassis insulation system
- Continuous and unrestricted boom rotation
- Manual or hydraulic basket tilt
- Emergency lowering - 12VDC powered
- Hydraulic tool outlet at upper and/or lower controls
- Single stick upper controls
- Outriggers for increased stability
- Torsion bars for increased stability



Utility Truck Equipment MFG, L.L.C.
 PO Box 9, 821 Enterprise
 Hewitt, TX 76643

WWW.UTEMBUCKETS.COM